



UMassAmherst

Charles River Campus

## Boston Area Internship Opportunities

LEAD Information Session  
March 10, 2026

**BE REVOLUTIONARY™**



# HOW DO WE DEFINE STUDENT SUCCESS?

---

## University Perspectives

Student Retention  
Educational Attainment  
Academic Achievement  
**Student Advancement**

## Student Perspectives

Holistic sense of fulfillment  
**Strong candidates for careers**



# NATIONAL ASSOCIATION OF COLLEGES AND EMPLOYERS JOB OUTLOOK SURVEY

Figure 1: Employers' hiring preferences relative to experience

HIRING PREFERENCE	2017	2016	2015	2014	2013
I prefer to hire candidates with relevant work experience	64.5%	64.2%	72.5%	74.1%	71.0%
I prefer to hire candidates with any type of work experience (doesn't matter if it's relevant or not, just some type of experience)	26.1%	27.0%	20.1%	20.7%	19.9%
Work experience doesn't typically factor into my decision when hiring a new college graduate	5.1%	6.3%	3.9%	1.1%	4.8%
Other	4.3%	2.5%	3.4%	4.0%	4.3%



Work Experience  
was important to  
~90% of  
employers  
surveyed

# NATIONAL ASSOCIATION OF COLLEGES AND EMPLOYERS JOB OUTLOOK SURVEY

## INTERNSHIP EXPERIENCE THE MOST INFLUENTIAL FACTOR IN TOUGH HIRING DECISIONS

January 07, 2022 | By Kevin Gray

### CANDIDATE SELECTION



ATTRIBUTE	2022 AVERAGE INFLUENCE RATING*	2021 AVERAGE INFLUENCE RATING*
Has completed an internship with your organization	4.4	4.5
Has internship experience in your industry	4.3	4.3
Major	3.8	3.8
Has held leadership position	3.6	3.6
Has general work experience	3.7	3.6
Has been involved in extracurricular activities (clubs, sports, student government, etc.)	3.5	3.4
High GPA (3.0 or above)	3.1	3.2
Has no work experience	3.3	3.2

# 2021 STUDENT SURVEY REPORT

---

 **12,130** 

In this report, we present findings from 12,130 college students who participated in the pilot study of the National Survey of College Internships (NSCI).

Our finding that only 21.5% of survey respondents had participated in an internship is a striking departure from prior national estimates.

**67.3% of undergraduates reported wanting to engage in an internship but identified barriers like:**

- **Not knowing how to secure a position**
- **Heavy academic coursework**



# **SPEND A SEMESTER LIVING AT THE CHARLES RIVER CAMPUS**

---

- **Continue taking courses**
- **We will help you find internship opportunities**
- **Engage in professional development**
- **Pay same tuition**
- **Financial aid applies**
- **Courses count as residential credit**



# CHARLES RIVER CAMPUS

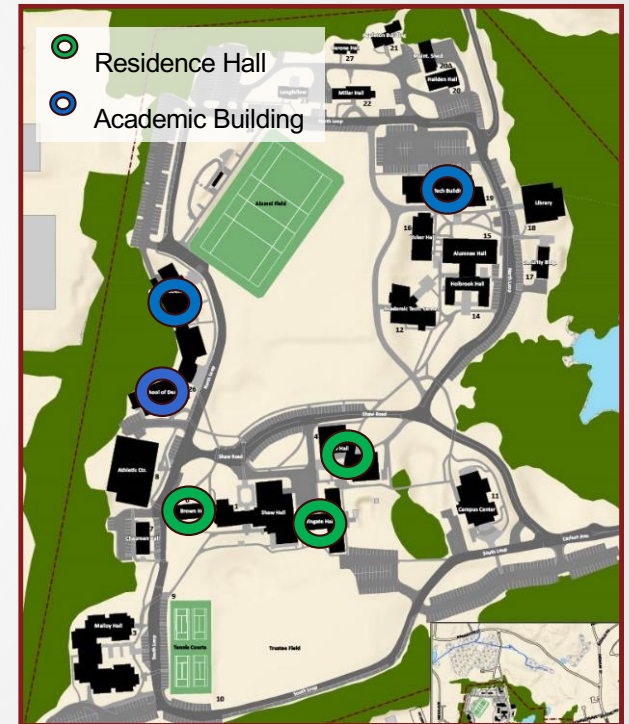
---

- **Wadsworth Library**
- **UMass Amherst Dining**
- **Athletics & Recreation**
- **Free YMCA Membership**
- **Student Study Space**
- **Podcast Studio**
- **Conference & Event Space**
- **Pond and Conservation Trails**



# RESIDENCE HALLS

- 3 Residence Halls
- 326 beds total



*Scan for more  
info on CRC  
Housing*

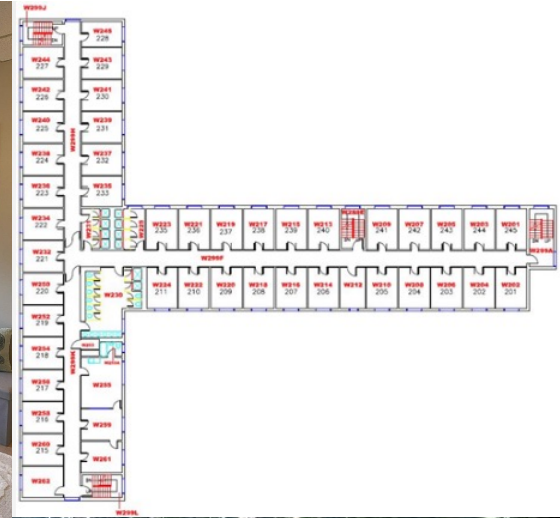
## New Hall

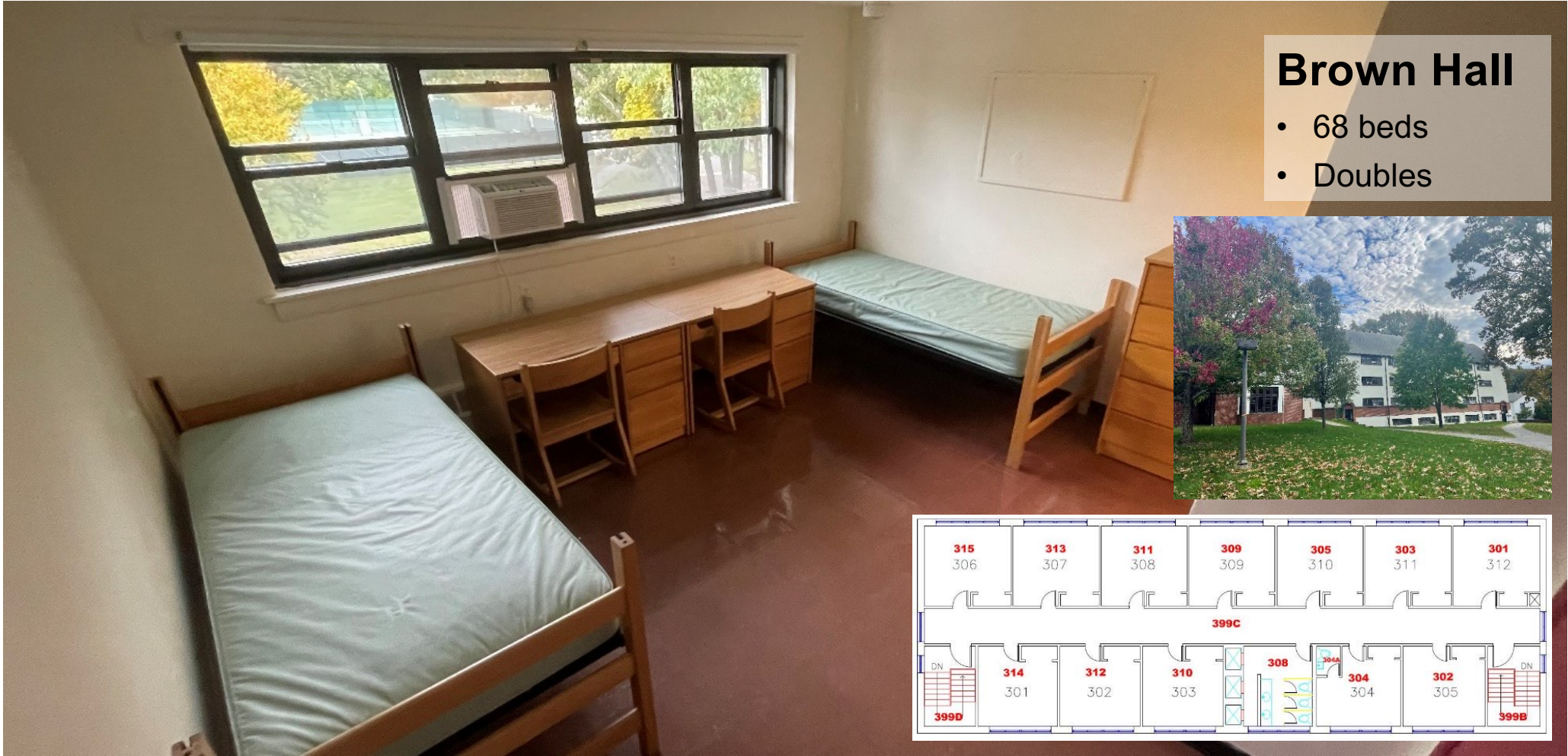
- 133 beds
- Singles, doubles and triples
- Premium/air conditioned



# Wingate Hall

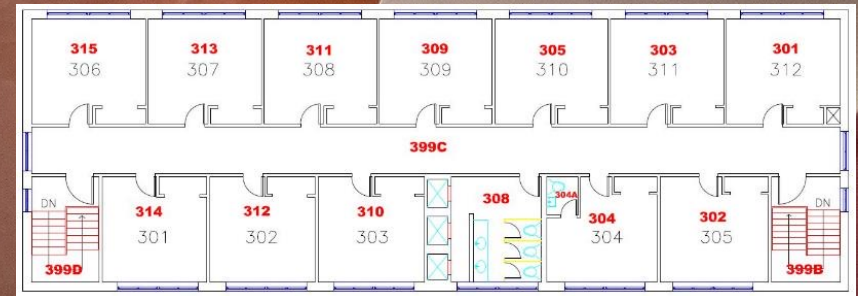
- 125 beds as singles
- Air conditioned





## Brown Hall

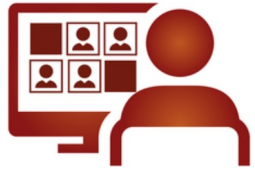
- 68 beds
- Doubles





### **In Person**

Instructors and students meet in the same physical location at the same time.



### **Live Online**

Instructors and students meet online at the same time.



### **Async Online**

Instructors and students engage online on their own time.



**ACCESS TO COURSES**  
Students at CRC can enroll in UWW courses for no additional fees on top of tuition

# INTERNSHIP FOR CREDIT

- Explore careers
- Gain experience
- Career mentorship
- Alumni connections
- Build your resume
- Earn 6-9 internship credits
- 250-500 work hours



# LEAD PROGRAMS

## LINKING EMPLOYMENT TO ACADEMIC DEVELOPMENT

LEAD Programs offer students the opportunity to spend a semester in Greater Boston **combining an internship with relevant academic coursework** at the Charles River Campus.

*"This internship provides me the chance to give back through engaging with the community and organization, while also expanding my career knowledge and skill sets."*

Sha Lee, '25  
CESL Intern at Understanding Our Differences

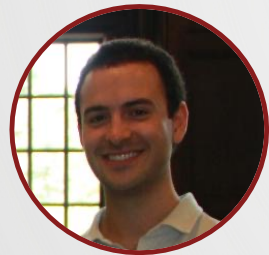


## TESTIMONIALS FROM LEAD PROGRAMS



**"This program was integral to my academic and professional development. It was amazing being able to meet students in my field, connect, and discuss different professions in the field."** -- Ymani Charmichael

"I personally would not trade this experience for anything; **it is an experience I never I knew I needed** to solidify my passion and **help me learn so much about myself.** The LEAD program truly cares about each and every student." -- Chiao-Min Chang



"This program has been an invaluable part of my college experience. **Gaining professional experience to apply classroom knowledge gave me the confidence and reassurance to pursue a career in this field.** It's given me a new perspective on college and post-grad."-- Owen Apigian

# INDUSTRY-RECOGNIZED CREDENTIALS TRAINING



American  
Red Cross



CPR/AED  
TRAINING



MENTAL  
HEALTH  
FIRST AID®



HIPAA  
COMPLIANT



## Co-Curricular Professional Development Program

- **Professional skills** workshops
- Regular resume workshops and **career counseling**
- Alumni **networking** and panels
- Boston-area **internship fair**
- **Clifton Strengths Assessment**
- Faculty **Speaker Series**

# TRANSPORTATION



## Uber program:

- Free for students
- Pre-approved trips
  - Public transportation hubs
  - Select internship sites
  - Healthcare and Retail Locations



## MBTA Passes

Free and ample parking



# STUDENT LIFE

---

## Access to Boston:

- Faneuil Hall
- New England Aquarium
- Franklin Park Zoo
- Red Sox Games
- Boston Harbor Cruises
- Freedom Trail
- Isabella Stewart Gardner Museum
- Museum of Fine Arts
- Esplanade
- Boston Common



# PSYCHOLOGICAL AND BRAIN SCIENCES LINKING EMPLOYMENT TO ACADEMIC DEVELOPMENT (LEAD)

## Charles River Courses

- Junior Writing (requirement)
- Psych 391 Seminar (requirement)
- Internship Credits (elective/requirement)
- UWW/U+ Courses (up to 9 credits if you live at CRC)

## Training Sessions

- HIPAA
- CPR/AED
- Mental Health First Aid
- Trauma Informed Practice
- Inclusive Workplace



# PSYCHOLOGICAL AND BRAIN SCIENCES LINKING EMPLOYMENT TO ACADEMIC DEVELOPMENT (LEAD)

**Semester:** Fall and Spring  
**Capacity:** 25+ students

## Internship Process:

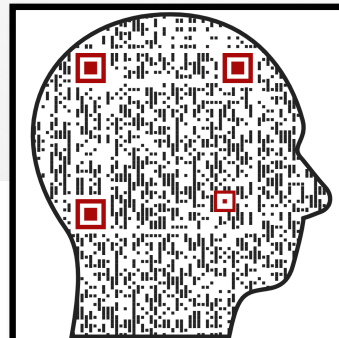
- Apply to program, no min qualifications
- Meet and discuss your goals and interests
- Connect you to internship sites for interview OR Propose own internship site

**Eligibility:** Open to all majors



# PSYCHOLOGICAL AND BRAIN SCIENCES LINKING EMPLOYMENT TO ACADEMIC DEVELOPMENT (LEAD)

McLean Hospital Neuroscience Research  
Walden Behavioral Health, Clinical Care  
New England Center for Children  
Walker Therapeutics & Educational Services  
Beth Israel Deaconess Hospital  
Newton Public Schools  
William James Court Clinic  
Integrated Center for Child Development  
Norfolk County Sherriff's Office  
Good Shepherds Hospice Care  
And more!



*Scan to complete the  
application for PBS LEAD*

# TESTIMONIALS FROM STUDENT LIFE

---

## Student life survey responses:

“I really felt **attended to and cared for** at the [Charles River] Campus and had a great experience.”

“I liked the **small community feel** of student life here.”

“I really loved the **small campus.**”

“I enjoyed how **small and quiet the campus was, which was great for when I came back from my internship.**”



## SOCIOLOGY LEAD OVERVIEW

- Fall and Spring semesters
- Cohort Size: 25
- We are open to all majors!
- Internship (6-9 credits) in a variety of sociology-related fields supervised by a Sociology instructor and LICSW, **Jacqueline Jimenez-Maldonado**
  - 4 credits of internship credits can count toward the Sociology major
- Students can take **Junior Year Writing in PBS** toward Sociology major
- Offered: **In-person SOCIOL 336: Clinical Practice in Social Work (4 credits)**
  - Counts for the Sociology major, minor, and Social Work certificate
  - Internship reflection and career skills integrated into course design
- **9 credits of UWW classes (no additional fee if you live at CRC)**



**Jacqueline Jimenez-Maldonado, LICSW**

Apply today!





**ICCD**  
INTEGRATED CENTER  
FOR CHILD  
DEVELOPMENT

## Sociology LEAD Internship Sites Include:

- New England Center for Children
- Family Aid
- MA Department of Children and Families
- MA Trial Courts
- MA Probation Court
- McLean Hospital
- Walker Therapeutics and Educational Services
- Walden Behavioral Health
- The Goddard School
- William James Juvenile Court Clinic
- Newton Public Schools (K-12)
- Norfolk County Sheriff's Office



# Spotlight on Sociology LEAD Intern, Hadi Bah '27

**“My sociology degree allows me to understand the social dynamics behind crime, but the Charles River program gives me real technical, hands-on skills.**

For me, sociology is not only a major to me; **it's a way of looking at the world.** It teaches me to look beyond the surface and to see the connections between individual actions and larger social patterns.”

– Sociology major Hadi Bah, Sociology LEAD Spring '26

Interning at the Massachusetts Probation Court



# Spotlight on Sociology LEAD Intern, Nina Zorzi '27

**"I'm currently interning at Bowen Elementary School in Newton, MA through the Charles River Campus. My internship is really great hands-on classroom and behavior management experience while also directly relating to what I've been learning in my sociology courses."**

– Sociology major Nina Zorzi, Sociology LEAD Spring '26

Interning at the Newton Public Schools



## BIOLOGY LEAD OVERVIEW

- **Biology LEAD will run Fall and Spring semesters**
- **Cohort Size: 25**
- **Open to Biology and Neuroscience majors**
- **Charles River Courses:**
  - Internship (6-9 credits) in Biology and Neuroscience-related fields supervised by Biology Senior Lecturer Rosa Moscarella
  - Junior Year Writing in PBS
  - BIOL 350: Ethics in Biomedicine, Biotechnology and Therapeutics (3 credits)
  - 9 credits of UWW/U+ classes (no additional fee if you live at CRC)



Apply today!



# BIOLOGY LEAD OVERVIEW

## Internship Process:

- Apply to program, no min qualifications
- Meet and discuss your goals and interests
- Connect you to internship sites for interview OR Propose own internship site

## Eligibility:

- Targeted to rising Juniors and Seniors
- Holistic application review



Apply today!

Beth Israel Lahey Health   
Beth Israel Deaconess Medical Center

Visterra   
TreeFrog   
therapeutics

 New England  
Aquarium  
*Protecting the blue planet*

 Museum of Science

 McLean |  
HARVARD MEDICAL SCHOOL AFFILIATE

 UMassAmherst  
Charles River Campus

# Spotlight on BIOLOGY LEAD

You!



## WANT MORE INFORMATION?

### **Sociology LEAD**

**Kat Fabel**, [kfabel@umass.edu](mailto:kfabel@umass.edu)

Director of Undergraduate Advising and Undergraduate  
Program Director, Sociology Department

### **BIO LEAD**

**Rosa Moscarella**, [rmoscarella@umass.edu](mailto:rmoscarella@umass.edu)

Senior Lecturer, Biology Department

### **PBS LEAD**

**Christina Metevier** [stina@umass.edu](mailto:stina@umass.edu)

Associate Provost for Academic Programs, MIC

# COME SPEND A SEMESTER WITH US!



# LEAD: Linking Employment to Academic Development

## PROSPECTIVE STUDENTS DAY

Thursday, March 26  
10 AM - 2 PM  
Charles River Campus



Visit the Charles River Campus in Newton to learn how you can spend a semester **interning** in **Greater Boston** through one of the LEAD programs. Transportation will be provided. **Scan the QR code** to reserve your spot today.



# LAW & POLICY JUSTICE PROGRAM

## Credit Options

- Social Justice in Practice: Law, Politics, & Policy (IE) 4 credits
- Internship Credits 6+ credits
- UWW Courses 9 credits



Offers practical experience for students interested in law, government, and social justice.



Matches students with credit-bearing law-related internships in Greater Boston area.



Helps students become more job-ready when they graduate.



# POTENTIAL INTERNSHIP PLACEMENTS

- City of Boston,
- State of Massachusetts,
- Quasi-governmental partners in and around City Hall;
- Examples include:
  - MA Appeals Court
  - MA Trial Courts and Probation Service
  - MA Office of the Attorney General
  - Committee for Public Counsel Services
  - MA Commission Against Discrimination
  - MA Commission for LGBTQ Youth
  - Fair Employment Project
  - UMass Foundation
  - Wayfair LLC



***Thank you! Any Questions?***

***We hope you will consider joining LEAD at Charles River  
Training the next generation of leaders***



**UMassAmherst**

**Charles River Campus**